

Living and Working Near Pipelines



What You Need To Know

Damage prevention is a shared responsibility.



Important Safety Information

In Canada, the Trans Mountain Pipeline system is regulated by the Canada Energy Regulator. Regulations for working in proximity to our pipelines ensure their continued safe operation and protect the public, property and the environment. For more information, visit cer-rec.gc.ca.

Preventing damage to underground infrastructure is a shared responsibility among pipeline companies and all stakeholders, including contractors, excavators, landowners and the public.

Before you start digging or building, you need to know who to contact, what permissions you need and what to do if something goes wrong. This important information is provided in the brochure.

For more information about pipeline safety, please visit our website:

transmountain.com/pipeline-safety

Pipeline Safety

Pipelines are the safest and most efficient way to transport petroleum to market.

At Trans Mountain, pipeline safety is our number one priority.

We have developed programs that maximize pipeline safety and focus on protecting the public, the environment and our employees. These comprehensive programs include corrosion protection, 24/7 monitoring from our control centre, inline inspections, leak detection, right-of-way patrols and emergency response plans. We continue to enhance our safety programs every day. We work with Indigenous communities, landowners, contractors, emergency responders, elected government officials and government employees to make sure our pipeline and facilities continue to operate safely – and, if there's an emergency, we are ready to respond rapidly and effectively. More information can be found at transmountain.com/pipeline-safety.

Trans Mountain
Right-of-Way

Understanding the Pipeline Right-of-Way and Prescribed Area

A pipeline is located within a right-of-way – a linear corridor of land kept free of tall vegetation and permanent structures to allow safe pipeline access for visual inspection, maintenance or emergency response.

Markers are used to indicate the approximate location of the pipeline as well as important information, including the type of product carried, the local One Call number and Trans Mountain's 24-hour emergency line.

may result from ground disturbance activities. Under Canadian regulations, all ground disturbance activities in the prescribed area require written consent, in the form of a permit, from Trans Mountain before any work begins.

Under Canadian regulations, the area within 30 metres from the centre of the pipe is referred to as the “prescribed area.” When more than one pipeline are co-located within the right-of-way, the prescribed area is measured from the outermost pipeline on each side. The prescribed area ensures the protection of pipelines from damage that

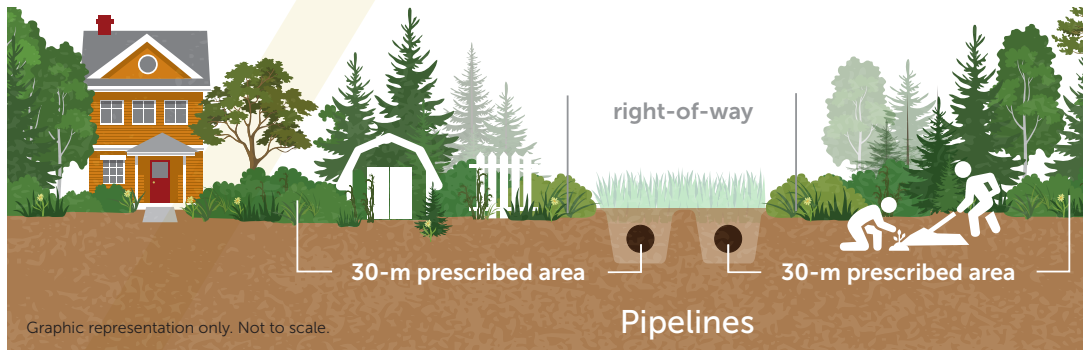
The existence of the prescribed area does not mean development of the land cannot occur within the 30-metre area. However, restrictions on land development apply to the right-of-way area. Please contact your local One Call service at least three days prior to beginning your ground disturbance activity.



NOTE: Pipeline markers do not indicate the exact location of the pipe.

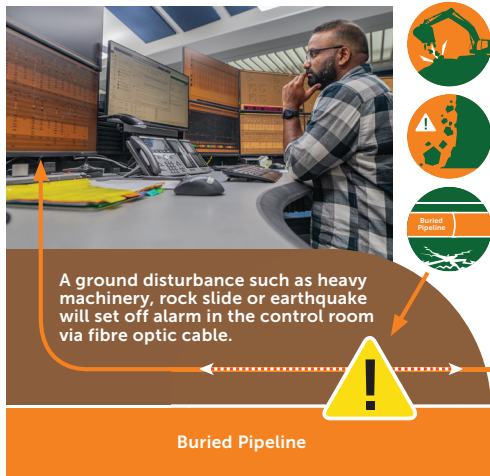
Pipeline Right-of-Way and Prescribed Area

All work within the prescribed area must be verified by a Trans Mountain inspector and requires a 30-metre permit.



Fibre Optic Sensing System

Trans Mountain is installing a state-of-the-art distributed fibre optic sensing system along the newly installed Line 2. The system will enhance our existing leak detection applications, provide additional structural integrity monitoring and help monitor for third-party ground disturbance activities.



Vehicle and Motorized Equipment Crossings

Crossing the pipeline with either a vehicle or other motorized equipment, when not driving on an existing road, requires our written consent.



Examples of vehicles and equipment include ATVs, snowmobiles, dump trucks, compactors, dozers, graders, loaders, excavators and wheeled or tracked construction vehicles and equipment.

Farmers operating agricultural vehicles across pipelines may do so if certain conditions are met. (See Agricultural Activities, page 8.)

Contact your local One Call service to begin the process for a safety assessment a minimum of three business days before any proposed crossing.

Trans Mountain provides written consent in the form of a permit at no cost to you.

For detailed information about permitting, visit: [transmountain.com/permits](https://www.transmountain.com/permits)

Before you begin any ground disturbance work, contact the One Call service to request the location of any buried utilities in the area. Follow these steps:

1.

**Click
Before
YouDig.com**

2.

Click on your province and complete a free One Call notification.

3.

If your planned work is near our pipeline, a Trans Mountain representative will call you back within three business days to discuss your proposed work and if required, meet you on-site to provide information to safely conduct your work.

The One Call service will require information, such as the planned start date of ground disturbance, an overview of your plans, how deep you'll be disturbing the ground, location of work and the duration. The details provided to One Call will be incorporated into a 30-metre permit issued for your proposed work, should a permit be required. If the job scope changes, stop work and place a new One Call with an updated job scope.



Any approved work undertaken within 7.5 metres of the pipe requires one of our Pipeline Protection Inspectors to be on-site to ensure the safety of our pipelines. Our inspectors have the authority to stop any work that may pose an imminent danger to the pipeline.



Trans Mountain's Written Consent and Types of Permits

Work within 30 metres from centre of the pipe

To ensure the safety of the public, property and the environment,

any ground disturbance activity to a depth of 30 centimetres or greater within the prescribed area (30 metres from the centre of the pipe) requires our written consent, in the form of a **Trans Mountain 30-Metre Permit**.

Ground disturbance activities may include any activity either below or at ground level that disturbs or displaces the existing soil or ground cover, such as digging, trenching, drilling, plowing, clearing and grading and other activities related to property improvement projects or other works.

Through our 30-metre permit process, Trans Mountain will identify any potential impact of the proposed work to the pipeline and will outline requirements you need to follow to ensure the work can be completed safely.

While permanent above-ground structures, such as buildings or poles, are not allowed within the right-of-way area, certain improvements, like underground utilities, roads, trails and driveways can be installed in accordance with our safety requirements.

Planning and Design One Call Ticket

If you are considering any improvements within the right-of-way that may require a longer lead time, we recommend you place a Planning and Design One Call Ticket in advance to ensure your works meet safety requirements. We will work with you and provide feedback as you plan, and determine if a Pipeline Proximity (Crossing) Installation Permit (Proximity Permit) is required.



Proximity Permits are typically required for installations or crossings within the right-of-way.

It is a continuation of the process, which starts with placing a One Call and requesting information about the location of underground infrastructure. You may be required to provide site and elevation drawings with your Proximity Permit application. Provided the application is complete, it will take up to 10 business days to be processed and a Proximity Permit issued.



transmountain.com/permits

Agricultural Activities

Includes any work of producing crops and raising animals and includes plowing, disking, harrowing and pasturing. It does not include the construction of new buildings or impervious areas or the placement of footings, foundations, pilings or posts, including fence posts.

Farming or deep tillage at a depth of 45 centimetres or greater can be a threat to the safety of the pipeline as well as you, your livestock, the public and the environment. If any deep tillage is planned, please notify us by contacting your local One Call service.

Normal agricultural activity, at a depth less than 45 centimetres, is permitted on the right-of-way.

Right-of-Way

Activities Not Permitted on the right-of-way



For everyone's safety, we don't allow certain activities on the right-of-way. These include but are not limited to:

- Parking vehicles or RVs on the right-of-way
- Constructing buildings, foundation walls, decks or sheds
- Installing any type of swimming pools or hot tubs
- Using explosives
- Burning waste material
- Storing flammable materials, equipment or bulk goods
- Growing or planting large vegetation or trees – for more information about landscaping near our pipeline, please visit our website at transmountain.com/landscaping-guidelines

The mature growth of vegetation on the right-of-way must not exceed one metre within three metres of the pipeline and 1.8 metres on remaining portions of the right-of-way.

Working Safely

Near the pipeline

Our requirements for ground disturbance activity within the 30-metre prescribed area are:

- A Trans Mountain representative must be on-site for any work within 7.5 metres from the centre of the pipe
- Power-operated equipment is allowed, with prior approval, within five metres from the centre of the pipe only after the pipeline has been hand exposed in the presence of a Trans Mountain representative
- Hydrovac is an acceptable alternative to hand digging
- Any work within 0.6 metres from the edge of the pipe must be done by hydrovac or hand shovel
- No ground disturbance – including mechanical excavation – directly overtop or underneath the pipeline

Trans Mountain's Obligations

After receiving a One Call notification for your project, Trans Mountain will:

- Respond within three business days
- Confirm the proposed works outlined within the notification, location and timing
- Schedule an appointment to meet with you on-site to mark the pipeline, issue a Trans Mountain 30-Metre Permit and discuss next steps as required
- Conduct a safety meeting to explain the ground disturbance regulations and requirements
- Stay on-site for any work within 7.5 metres of our pipeline, including backfill



TRANSMOUNTAIN

Ground Disturber's Responsibilities

Before you begin any ground disturbance work, it's your responsibility to ensure the following actions are taken:

- Notify us of your activity by contacting your local One call service
- Attend our on-site safety meeting
- Be on-site when the pipeline is marked and understand what the markings mean
- Ensure any new workers are informed of the requirements
- Provide a minimum of three business days advance notice to Trans Mountain prior to starting work within 7.5 metres to schedule an inspector to be on-site
- Follow the instructions provided by Trans Mountain
- Ensure that any work within 0.6 metres from the edge of the pipe is done by hydrovac or hand shovel
- If your project scope changes or your permit expires, please submit a new One Call identifying the changes or renewing the ticket. Permit approvals are based on the scope of work outlined in the original One Call ticket.
- Always have valid permits on-site



⚠️ If You Come in Contact with the Pipeline

No matter how minor the damage may appear, if you come in contact with the pipeline, you must immediately contact our 24-hour emergency line at: **1.888.876.6711**



NEVER COVER IT UP!

Even slight damage – a gouge, a dent, a scrape – can impact the structural integrity of the pipeline. Never attempt to repair it yourself.

It takes a qualified Trans Mountain technician to inspect and repair any damage.

In the case of an emergency excavation, notify the local One Call service to request an emergency locate.

Consequences for Not Placing a One Call or Obtaining Necessary Permits

Those who live or work near pipelines are responsible for ensuring safe ground disturbance by Clicking or Calling Before You Dig, which will confirm whether our permission is required.

Those who fail to notify us in advance through One Call services, obtain necessary permits or follow the instructions of our Pipeline Protection Inspectors may be subject to monetary penalties as per applicable regulations.

Unauthorized activities may cause property damage and negatively impact public safety and the environment.

Potential Hazards

Although rare, pipeline spills require immediate action and caution.

There are potential hazards associated with an unintended release from the pipeline.

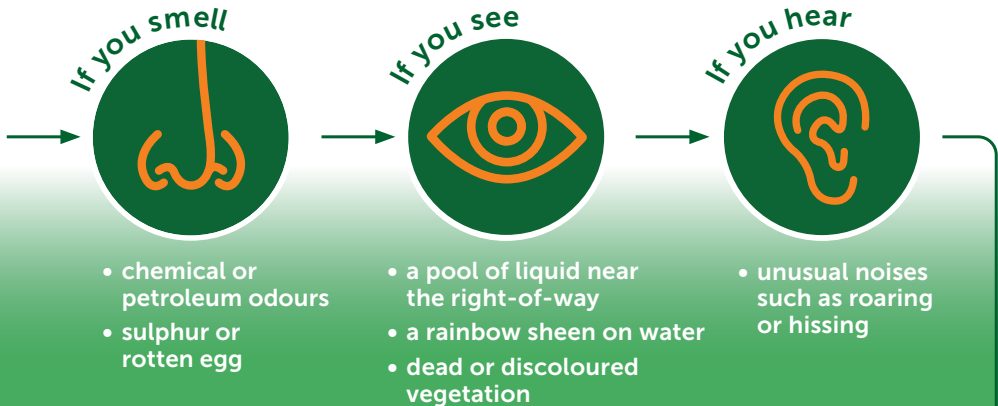
Products may be flammable and explosive under certain conditions, and inhalation of vapours may cause irritation to the upper respiratory tract.

For more information about hazards, visit:

transmountain.com/pipeline-safety

The most critical and responsible emergency management strategy is incident prevention. However, should an incident occur, Trans Mountain is ready to respond promptly with detailed emergency procedures, response equipment and trained personnel, as part of its comprehensive Emergency Management Program and in compliance with the requirements set out by the CER's Onshore Pipeline Regulations.

Recognize a Pipeline Emergency



LEAVE AREA immediately on foot crosswind, then upwind

- Abandon any mechanized equipment being used in or near the area
- Call Trans Mountain's 24-hour emergency line 1.888.876.6711
- Warn others to stay away
- Eliminate ignition sources (keyless door entry, cell phone or flashlight)
- Turn off vehicle engines

DO NOT re-enter the area

- Do not ring door bells or metal knockers; knock with your hand to avoid sparks
- Do not start your vehicle or drive into the release location or vapour clouds while leaving the area
- Do not operate pipeline valves
- Do not touch any liquid or vapour
- Do not try to extinguish any fires associated with the release; wait for trained professionals



Public Safety



If an emergency occurs, we will ensure all affected stakeholders are notified promptly and work with local first responders to secure public protection.

The most common pipeline emergency responses are shelter-in-place or evacuation. The best action to take is based on factors such as emergency



location, potential exposure during evacuation, anticipated emergency duration and advice from emergency responders and/or Trans Mountain.

REPORTING Petroleum Odours

If you are near our facility, you may occasionally smell petroleum, which can come from normal operations or routine maintenance.



Odours can also indicate a pipeline emergency. Any potential emergency, including odours, should be reported to our

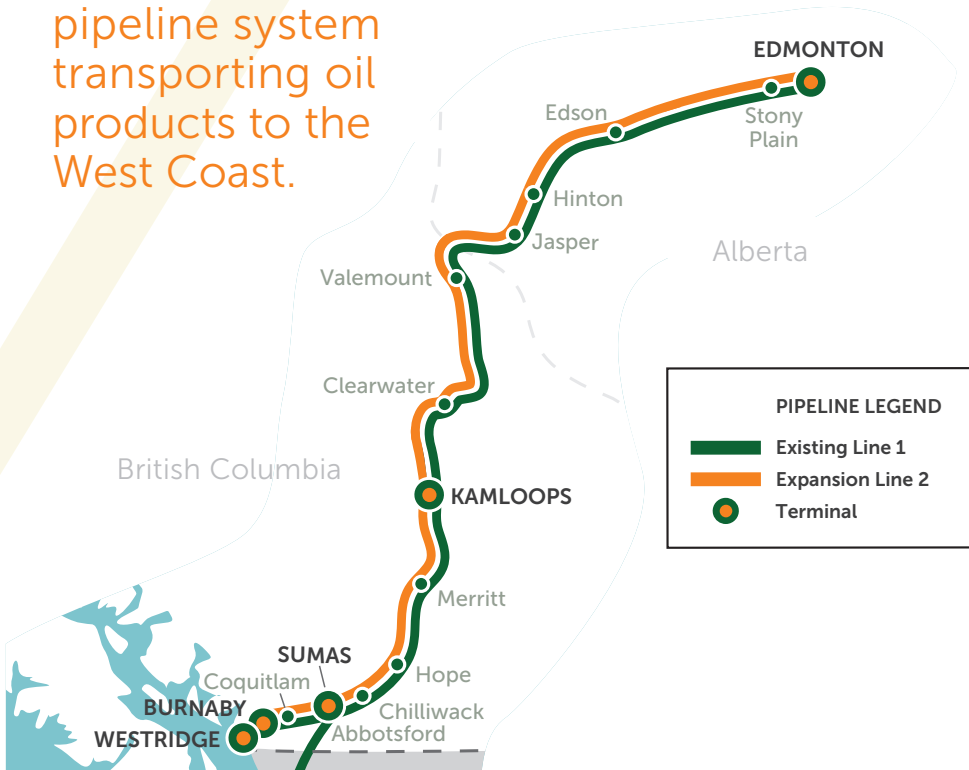
24-hour emergency line: 1.888.876.6711

Learn more about our robust program:
transmountain.com/emergency-management

About Trans Mountain

Since 1953, we have been operating Canada's only pipeline system transporting oil products to the West Coast.

We deliver approximately 890,000 barrels of petroleum products each day through 1,150 kilometres of pipeline in Alberta and British Columbia, and 111 kilometres of pipeline in Washington state.





**Click
Before
YouDig.com**

BC 1 Call
1.800.474.6886

Utility Safety
Partners
1.800.242.3447



Pipeline Emergency?
Call 911 and
1.888.876.6711

en francais



ਇਸ ਬਰੋਸ਼ਰ ਦਾ ਇੱਕ ਸੰਸਕਰਣ ਪੰਜਾਬੀ
ਵਾੱਚਿ ਉਪਲਬਧ ਹੈ



本手册有简体中文版本



Pipeline Protection Department 1.888.767.0304
info@transmountain.com



Trans Mountain is federally regulated in Canada by the Canada Energy Regulator. Any individual or organization working on or near our pipelines or facilities must adhere to all applicable regulations. For more information, visit cer-rec.gc.ca.